

# High-Throughput Calcium and Contractility System



100-fold increase in calcium and contractility throughput

Streamlined and more accurate batch analysis software

Environmental control

## CytoCypher MultiCell System

The isolated cardiac myocyte represents the smallest fully functional model system of heart muscle, and our Calcium and Contractility system has long been the gold standard for functional characterization of isolated adult heart cells for years but is limited by its slow rate of data collection. Now, with the groundbreaking new MultiCell high-throughput C&C system, 100 times more cells can be acquired and analyzed in the same amount of time, resulting in higher statistical power and confidence in data, increased efficiency, and ultimately lowered costs for researchers, particularly in drug candidate screening.

The turn-key MultiCell system offers all of the precise, thorough characterization of the C&C system with higher throughput and improvements to environment control and data fitting, providing a leap forward for the field of cardiovascular research.



# Features

## Speed

- Mark-and-find for fast location and identification of cells
- Rapid x- and y-stages
- Autofocus
- Digital cell rotation
- Can measure from 100s of cells an hour
- Automated cell finding

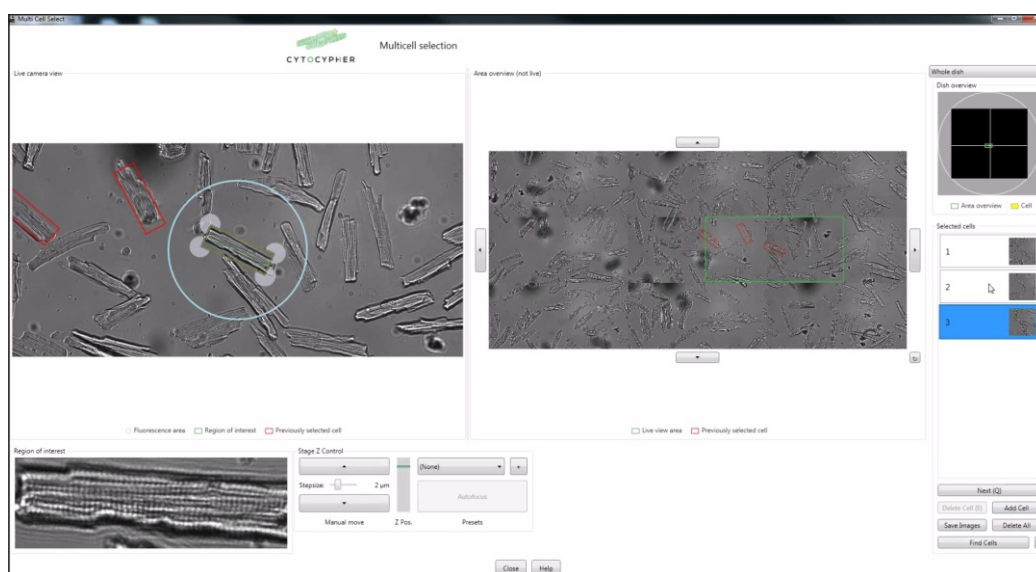


## Better, Faster Analysis

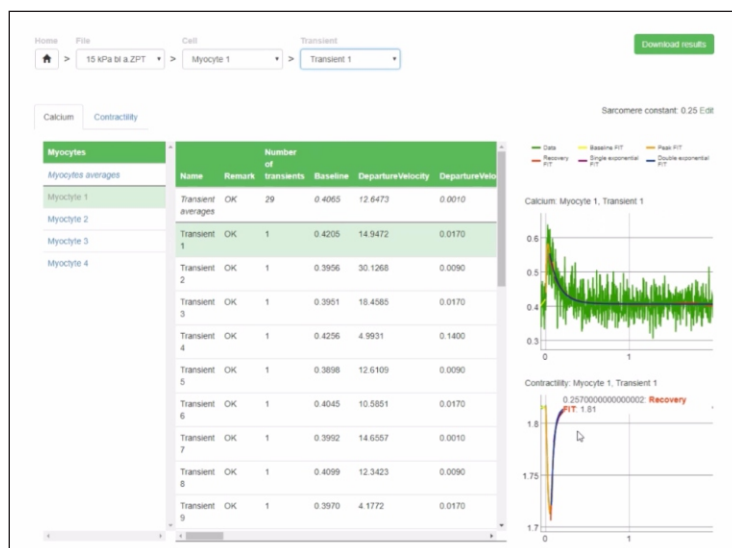
- Fast batch analysis with automated transient marking
- Double exponential fit of calcium reuptake curve for improved reliability and accuracy

## Environmental Control

- Control of temperature, as well as humidity and gas in future



MultiCell myocyte mark-and-find window with digital cell rotation and autofocus.



MultiCell cloud-based batch transient analysis tool.